



BUILD FAST HOZZING
P R E F A B

YOUR DREAM HOME, PREFABRICATED TO PERFECTION





BUILD FAST HOZZING

P R E F A B

FEATURES



TIME-EFFECTIVENESS

AROUND 60%–70% OF CONSTRUCTION IS COMPLETED IN A CONTROLLED FACTORY ENVIRONMENT, REDUCING WEATHER-RELATED DELAYS. EFFICIENT ON-SITE EXECUTION FURTHER SHORTENS THE TIMELINE, ENABLING PROJECTS TO BE COMPLETED IN NEARLY HALF THE TIME OF TRADITIONAL CONSTRUCTION—FOR EXAMPLE, 6 MONTHS REDUCED TO APPROXIMATELY 3 MONTHS.



FLEXIBILITY

FLEXIBILITY AND RELOCATABILITY OF MODULAR COMPONENTS ADD TO THE COST-EFFECTIVENESS OVER TIME. THEIR DURABLE, SECURE AND RELOCATABLE CHARACTERISTICS MAKE THEM IDEAL FOR BOTH TEMPORARY AND PERMANENT APPLICATIONS THAT WILL MEET THE REQUIREMENTS OF ANY INDUSTRY.



SUSTAINABILITY

THE FULLY CONTROLLED FABRICATION PROCESS WAS CARRIED OUT ENTIRELY ON-SITE. GENERATES LESS WASTE, CREATES FEWER SITE DISTURBANCES, AND ENSURES TIGHTER, MORE PRECISE CONSTRUCTION.



LOW-COST

BECAUSE CONSTRUCTION OF MODULAR BUILDINGS CAN OCCUR SIMULTANEOUSLY WITH THE SITE AND FOUNDATION WORK, PROJECTS ARE COST-EFFECTIVE THAN TRADITIONAL CONSTRUCTION.



QUALITY

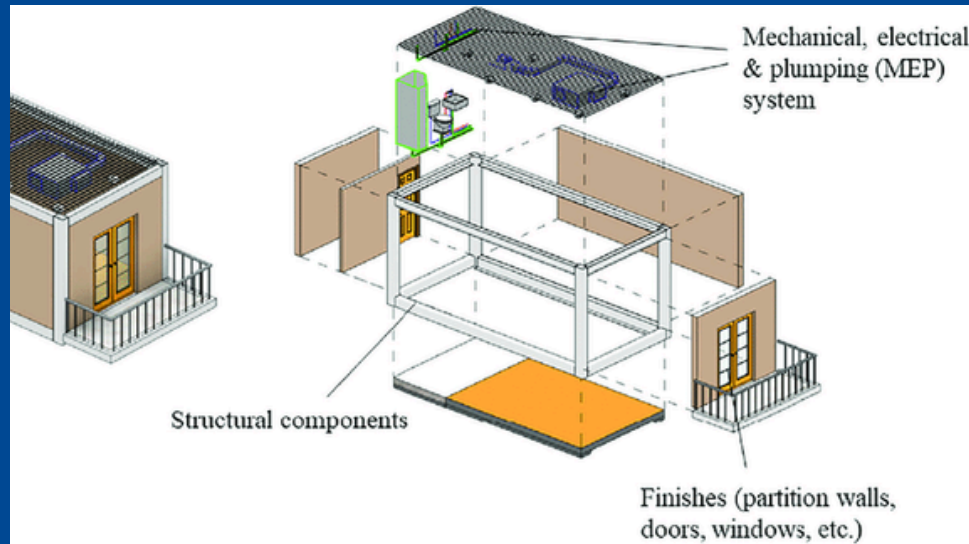
BUILD FAST HOZZING UTILIZES STATE-OF-THE-ART FACILITIES THAT INTEGRATE BEST PRACTICES IN DESIGN AND WORKFLOW. MODULAR BUILDINGS ARE REQUIRED TO MEET THE SAME BUILDING CODES AS TRADITIONAL CONSTRUCTION.



BUILD FAST HOZZING

P R E F A B

TECHNOLOGY & DESIGN



BUILDING SYSTEMS

Build Fast Houzzing uses advanced dry construction technologies and industry-tested systems to deliver efficient building solutions. All fabrication is carried out in our manufacturing facility, supported by our expertise in precision processing, CNC-based production, and rapid on-site assembly, ensuring fast construction timelines without compromising on quality.



BUILDING CONFIGURATION

At Build Fast Houzzing, we champion true modularity in construction. Buildings are not merely designed—they are configured through a flexible system of standardized components produced in our factory. Every interior and exterior surface, function, and layout is customizable, giving clients endless design possibilities and complete control over their space. Your imagination shapes the build.



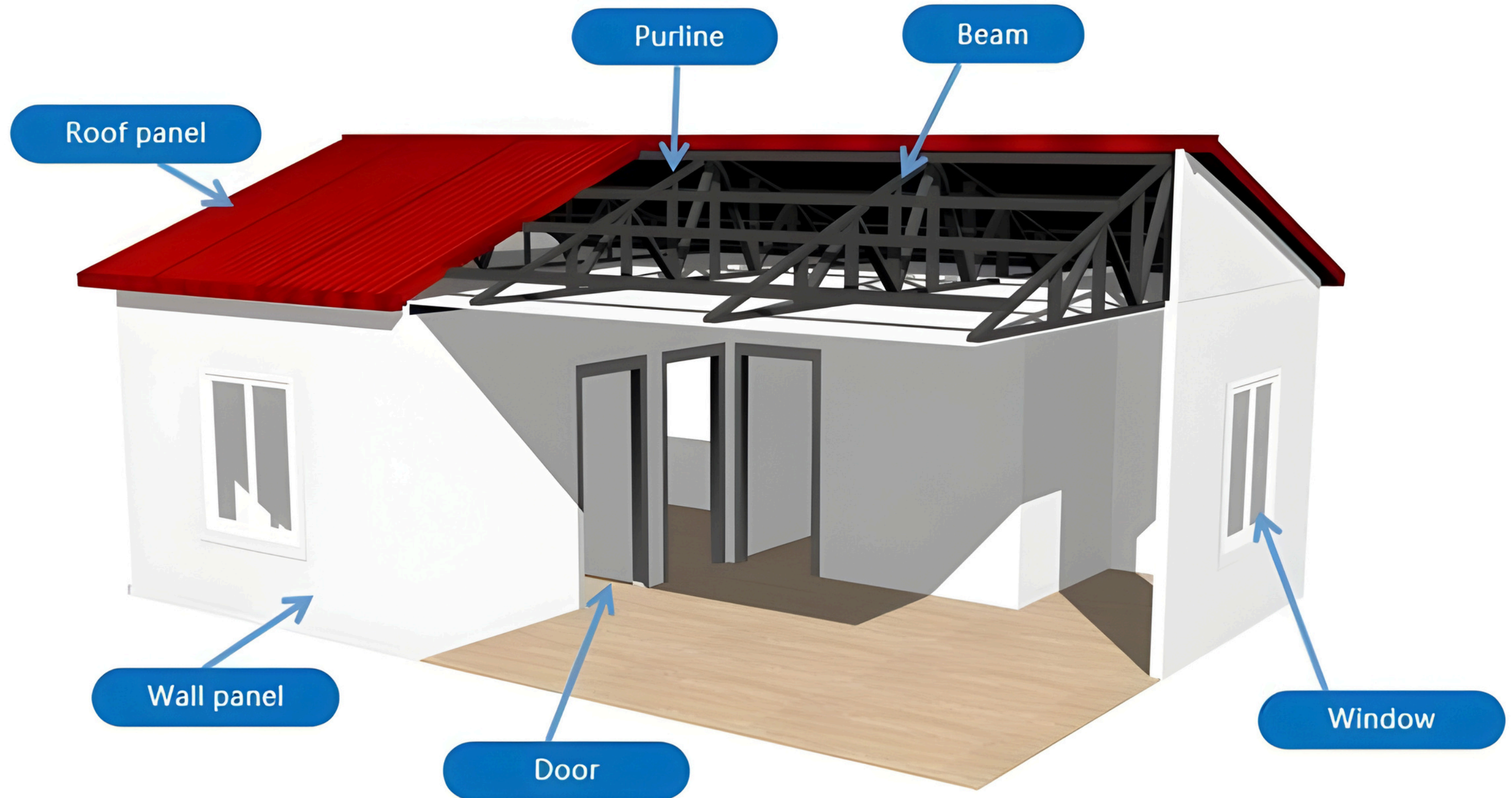
PRODUCT DISTRIBUTION

Every prefab component arrives ready for quick on-site installation with error-proof joints. No specialized labour is required, ensuring fast construction and reliable performance. Our system delivers eco-friendly, high-quality buildings with efficient mounting.



BUILD FAST HOZZING
P R E F A B

SECTION DETAILS



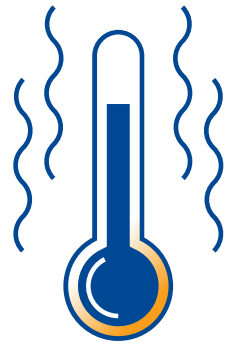


BUILD FAST HOZZING

P R E F A B

THERMAL & ACOUSTIC INSULATION

Build Fast Housing uses an advanced multi-layer wall and roof system engineered for durability, superior energy efficiency, and excellent sound control, ideal for modern homes, resorts, offices, and community buildings.



THERMAL INSULATION

Thermal Insulation :
U-value: $0.29 \text{ W/m}^2\cdot\text{K}$

Our insulated steel panels deliver outstanding thermal performance, minimizing heat transfer and maintaining comfortable indoor temperatures year-round. A U-value of $0.29 \text{ W/m}^2\cdot\text{K}$ ensures strong energy efficiency, helping reduce heating and cooling costs.



ACOUSTIC INSULATION

Acoustic Insulation:

Designed to create quiet, peaceful interiors. This significantly reduces external noise, enhancing privacy and overall comfort in every room.

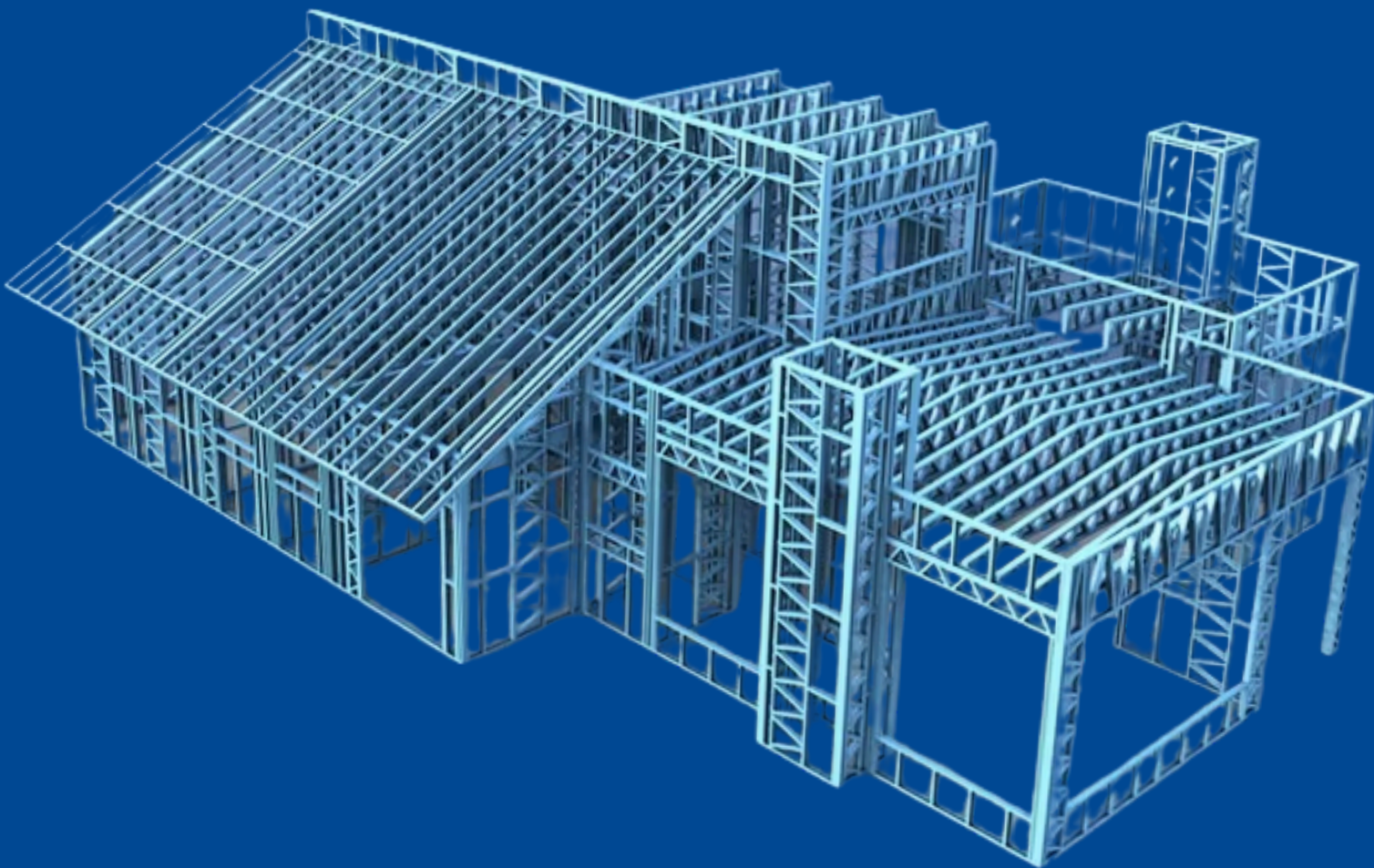


BUILD FAST HOZZING

P R E F A B

STRUCTURAL SAFETY

DESIGN PARAMETERS



MATERIAL GRADE:

Our structures use high-strength cold-formed steel members with a yield strength of 250 MPa, engineered for rapid construction while ensuring long-term durability. Sections are designed in accordance with IS 2062/ASTM A36 standards for main frames, floors, and wall systems.

DESIGN LOADS

DEAD LOADS:

Floor: 32.29 kg/m²

Internal Walls: 39.88 kg/m²

External Walls: 37.66 kg/m²

Roof: 35.66 kg/m²

Live Loads:

ROOF: 50 KG/M²

FLOOR: 200 KG/M²

WIND LOADS:

Basic Wind Speed: 180 km/hr

Design Life of Structure: 50 years.

SEISMIC LOADS:

Seismic Zone: IV

STRUCTURAL ANALYSIS

A complete 3-D analytical structural model is generated for all Build Fast Housing units using STAAD Pro. All relevant loads including self-weight, live load, wind load, and seismic forces are applied in accordance with IS codes. Structural members are checked as per IS 801-1975 for:

- Strength
- Serviceability
- Overall stability

CODE COMPLIANCE & STANDARDS

Build Fast Housing follows a strict code-based design philosophy. We utilize the latest revisions of relevant Indian Standards (IS) for steel design and loading. Where Indian Standards do not cover a specific scenario, international codes and best practice engineering guidelines are adopted to ensure safety and performance.



BUILD FAST HOZZING
P R E F A B

WHAT WE MAKE



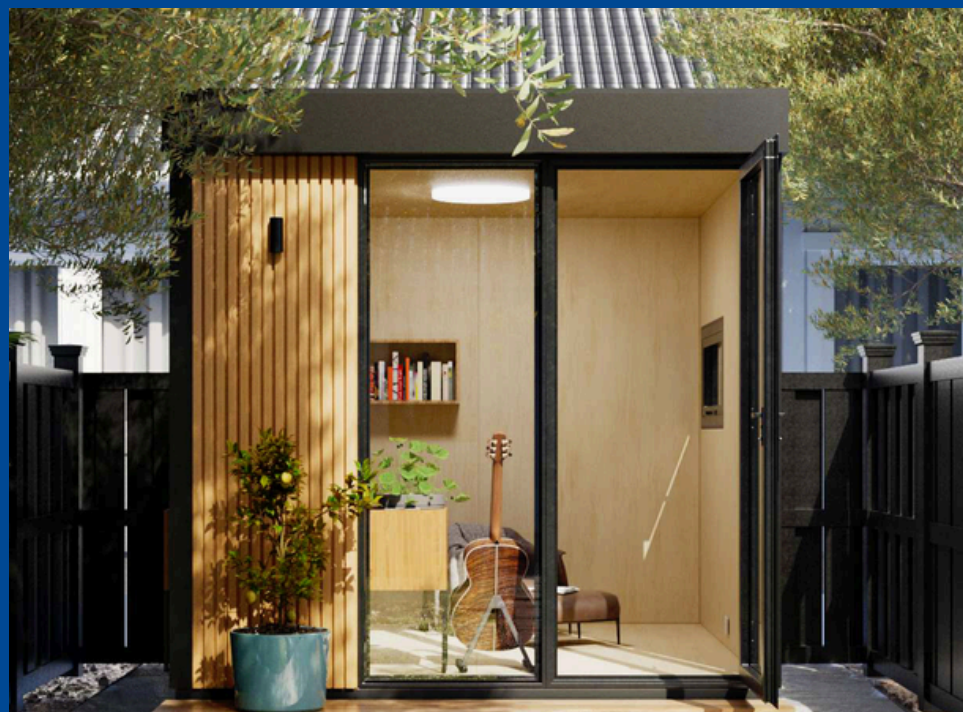
1 B H K



2 B H K



3 B H K



STUDIO



SINGLE



BUILD FAST HOZZING

P R E F A B

1 B H K





BUILD FAST HOZZING

P R E F A B

1 B H K





BUILD FAST HOZZING

P R E F A B

2 B H K





BUILD FAST HOZZING

P R E F A B

2 B H K





BUILD FAST HOZZING
P R E F A B

3 B H K





BUILD FAST HOZZING
P R E F A B

3 B H K





BUILD FAST HOZZING

P R E F A B

STUDIO





BUILD FAST HOZZING

P R E F A B

STUDIO





BUILD FAST HOZZING
P R E F A B

SINGLE





BUILD FAST HOZZING

P R E F A B

SINGLE

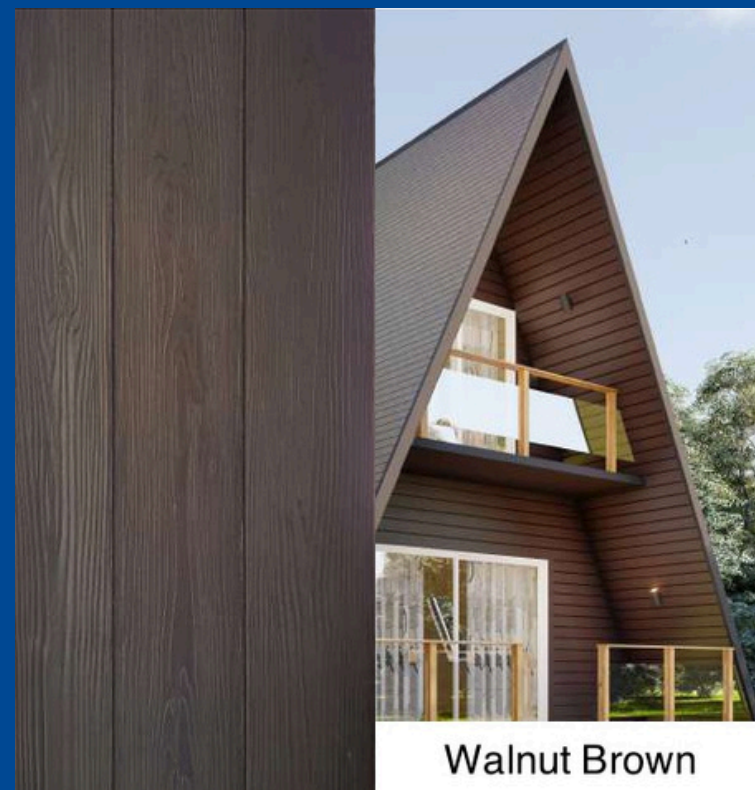
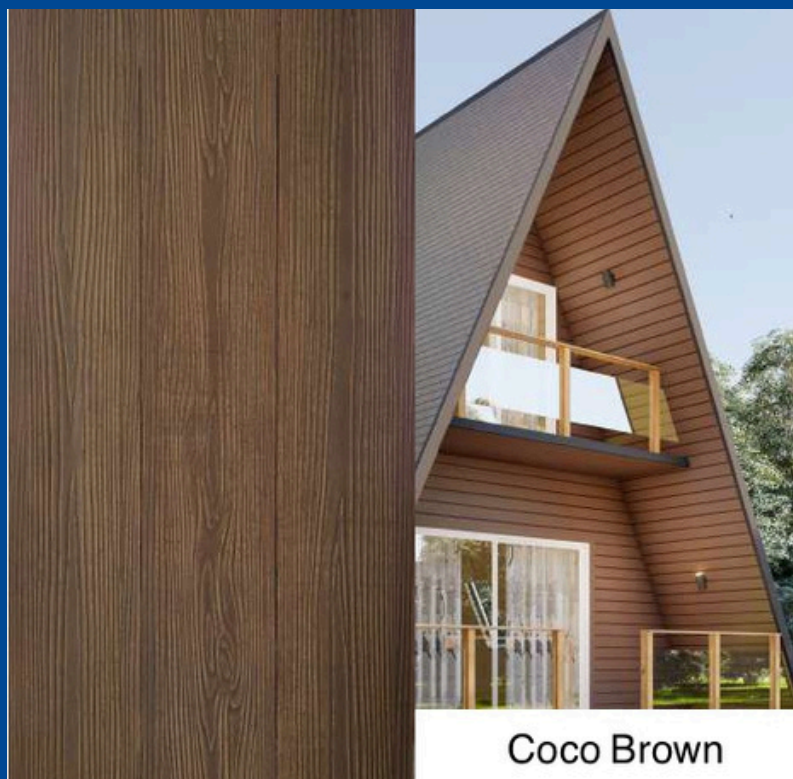




BUILD FAST HOZZING

P R E F A B

EXTERNAL WALL CLADDING WOOD FINISH CEMENT SIDING (STANDARD INCLUSION)





BUILD FAST HOUZZING

P R E F A B

SPECIFICATIONS / TERMS & CONDITIONS

STRUCTURE: The entire structure is designed as a hybrid system with Light Gauge Steel framing technology imported from Australia, fabricated using advanced CNC-controlled machines, along with mild steel load-bearing sections.

FOUNDATIONS / PLINTH: The client needs to provide the RCC plinth for the structure. Alternatively, a steel path over RCC foundations or a pre-cast foundation system is available at an extra cost.

STRUCTURE WRAPPING: The entire steel structure is wrapped with OSB boards on both the exterior and interior. These boards are lightweight yet very strong, waterproof, and termite-resistant.

WATER PROOFING MEMBRANES: The entire external surface of the cottage is covered with waterproofing membranes and sealed with aluminium tapes for maximum moisture protection.

INTERNAL WALL & CEILING: All internal walls and ceilings are finished with gypsum boards over the OSB boards and painted in the client's choice of colour. Pine wood cladding on walls or ceilings is optionally available at extra cost. Bathroom walls are finished with ceramic tiles from Kajaria.

EXTERNAL WALL & ROOF: The external walls are clad with cement fibre planks. Other wall cladding options are available at extra cost. The roof is clad with asphalt shingles from Technonical, which come with a 50-year warranty.

INTERNAL & EXTERNAL FLOOR: Common areas and bedrooms are finished with vitrified tiles as per the client's choice. Toilets are fitted with vitrified tiles from Kajaria. External decks, if included in our scope, are constructed with Thermo Pine wood treated with weatherproof oils.

DOORS & WINDOWS: All internal doors are made of laminated flush doors, while external sliding or fixed doors, windows, and main doors are made from UPVC sections fitted with 5 mm thick toughened glass. Options for double-glazed units (DGU) and mosquito mesh are available at extra cost. Skylights can be incorporated into the roof without extra charge, while skylight blinds are available at an additional cost. Our standard UPVC colour is white, although grey or wood-finish UPVC is also available for an extra cost.

PLUMBING & TOILET FIXTURES: The toilet in the cottage comes fully equipped with internal pipelines made from CPVC and fitted with fixtures from Essco Jaquar, including WC, washbasin, faucets, and other accessories. The client is responsible for connecting the water supply and waste outlets on-site after the cottage erection is completed. Water storage tanks, pressure pumps, and shower glass partitions are not included.

ELECTRICAL FITTINGS : Complete electrical fittings are included, comprising switches, sockets, fans, and LED lights. Internal wiring is from R R Kabel. Switches and sockets are from Legrand, LED lights are from Panasonic or similar, and fans are from Crompton or similar. Electronics such as televisions, refrigerators, air conditioners, and geysers are not included and can be installed separately by the client. We do, however, provide concealed air-conditioning pipelines within the walls as per the layout plans.

FURNITURE: No fixed or loose furniture, soft furnishings, or decorative items are included in the standard scope. Kitchens and wardrobes are available at extra cost, while bathroom vanities are included.

TAXES: GST at 18% is applicable over and above the quoted prices.

TRANSPORTATION: Transportation costs are extra and charged at actuals.

INSTALLATION: Installation is included in the cost. However, the client is responsible for arranging boarding and lodging for the installation team and for bearing the rental expenses of cranes directly. The client must also ensure proper site access for trucks and cranes, as installation cannot be carried out manually. The client will provide either an electric or a generator.

PAYMENT TERMS: The payment terms require a 75% advance payment, with the remaining 25% balance due before dispatch.

WARRANTY & LIFE SPAN: Our homes and cottages come with a 5-year warranty covering any structural damage or leakages caused by rainfall. With proper maintenance, the design life span of our homes and cottages can exceed 50 years.



BUILD FAST HOZZING

P R E F A B

 +91 861 941 9533

 buildfasthouzzing@gmail.com